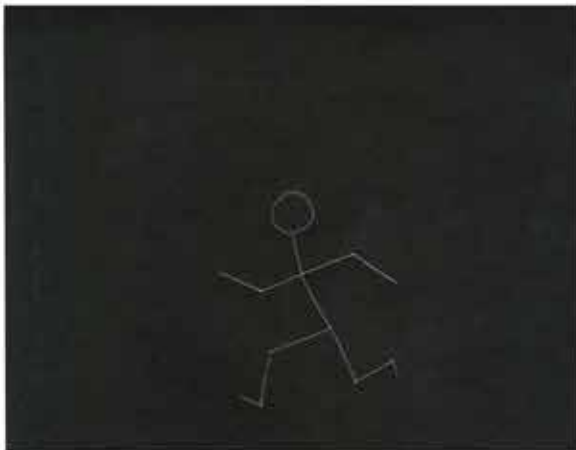


Haring-Inspired Chalk Drawing

Supplies Needed

- Black Construction Paper, 9x12"
- White Chalk
- Crayola Model Magic, Assorted Colors, 1 oz. per project
- Pencil



Step 1

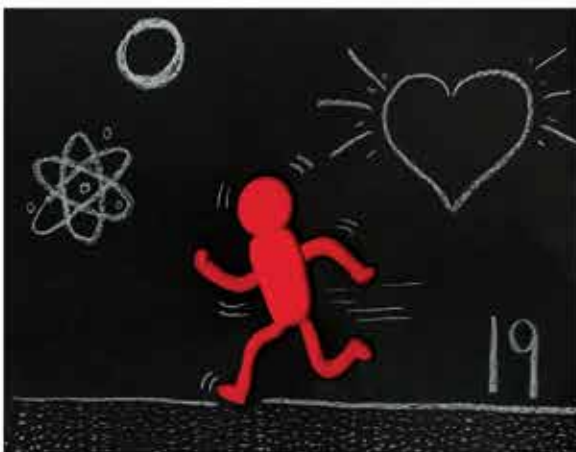
With a pencil, draw a stick figure in an action pose.



Step 2

Knead approximately 1 oz. of Model Magic until soft. Make a flattened ball for the head, a rectangle for the body and snake-like shapes for the arms and legs. Attach to the paper. Add small accents for the hands and feet.

Tip: If your Model Magic starts to get hard, knead it for about a minute and it will soften. Soft Model Magic will stick easily to itself and paper.



Step 3

Study the elements (semiotics) commonly used in artwork by Keith Haring. With white chalk, add elements that are similar in style to Haring's work. Add action lines for your figure and elements.

Semiotics is the study of signs and symbols, individually or grouped, that can give us more insight about the source and meaning of the artist. Haring used semiotics to portray words and themes in his artwork.



Haring-Inspired Chalk Drawing Project Kit

Web Project 246

40-Project Set—Includes 50 sheets of 9x12" Tru-Ray black construction paper; Crayola Model Magic Primary Colors Tub (8 oz. each of blue, red, white and yellow) and 4 oz. each of green and orange Crayola Model Magic; four packages of Crayola anti-dust chalk; and an instruction sheet. You will also need a pencil to complete the project. Model Magic and chalk are AP Seal, non-toxic.

Item Number - USCPK246